

Factor-

Divides into another
number with no remainder.

12

$6 \cdot 2$

$3 \cdot 4$

2

12

3

1

4

6

prime number

greater than 1
with exactly
two factors

$$7 - 7 \cdot 1$$

Composite Number

whole numbers

greater than 1 with

more than 2 factors

$$14 \quad 14 - 1$$
$$7 \cdot 2$$

Factorization

315

^

5 63

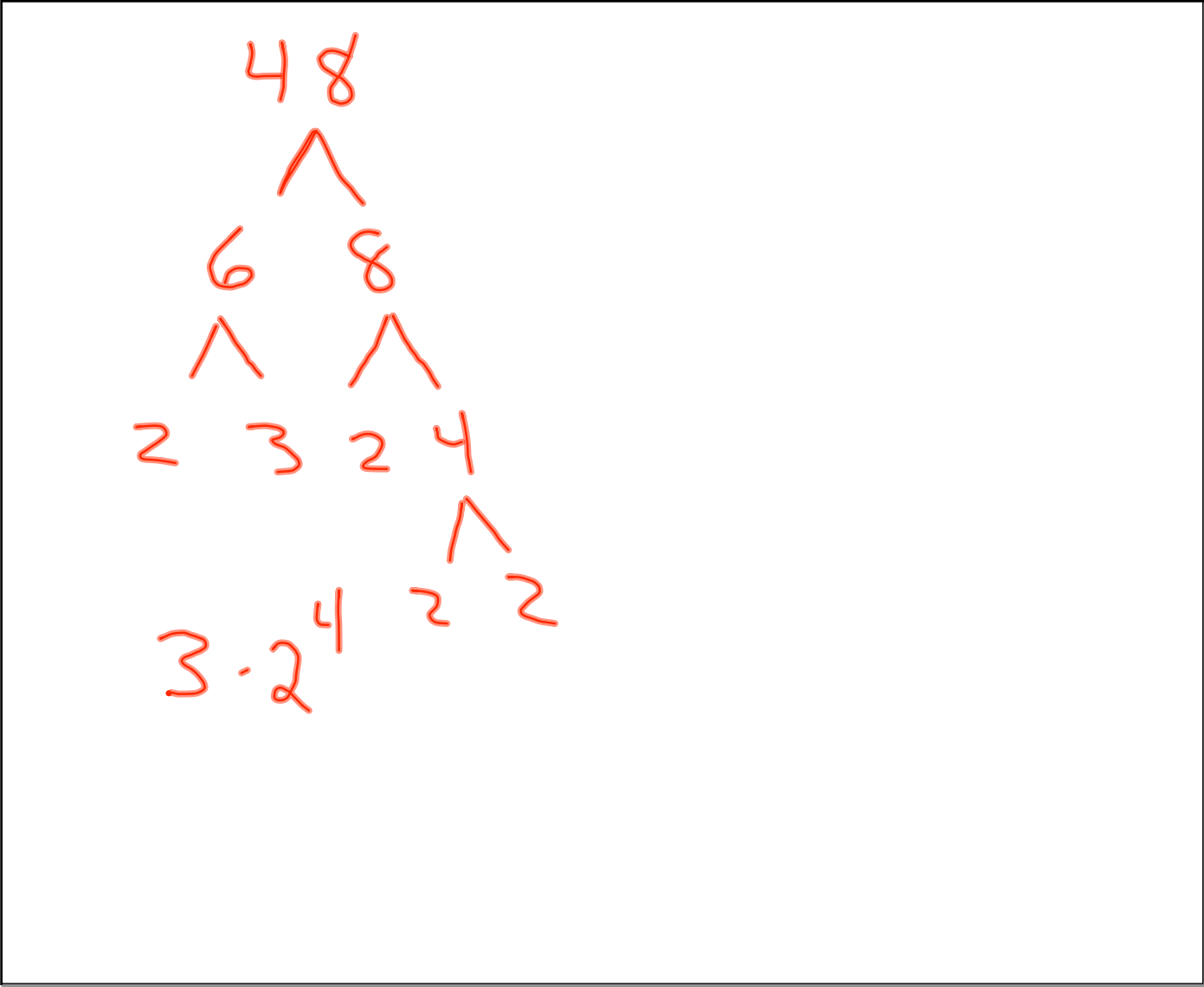
^

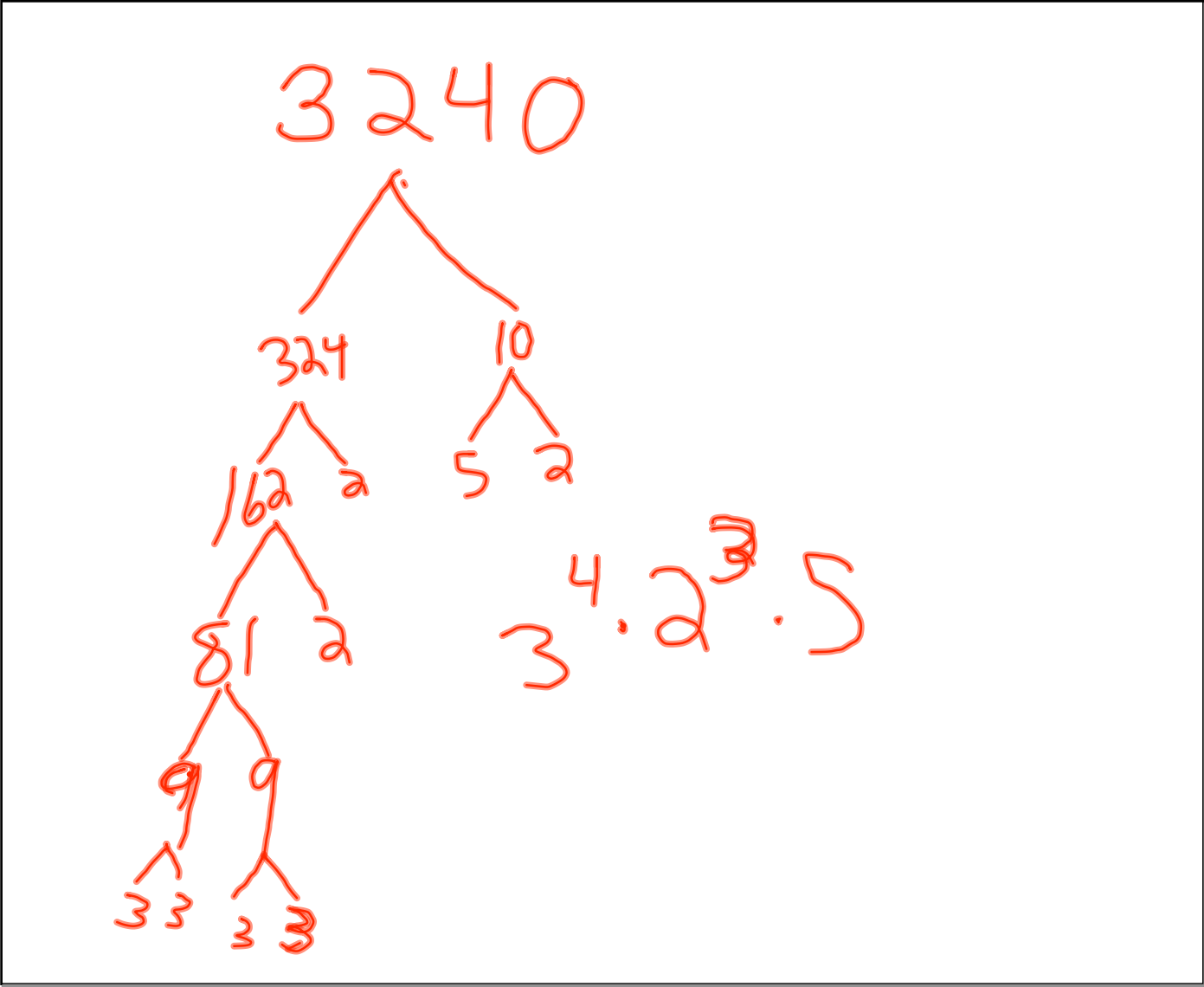
7 9

5 · 7 · 3 · 3

3 ^ 2

5 · 7 · 3²





Dimensional Analysis

$$2.5 \text{ days} \cdot \frac{1 \text{ year}}{365 \text{ days}}$$

$$\frac{2.5}{365}$$

$$365 \text{ days}$$

$$006.849 \times 10^{-3}$$
$$.006849$$

$$\frac{3\cancel{\text{m}}}{1\cancel{\text{hr}}} \cdot \frac{5280\cancel{\text{ft}}}{1\cancel{\text{m}}} \cdot \frac{12\cancel{\text{m}}}{1\cancel{\text{ft}}} \cdot \frac{1\cancel{\text{hr}}}{60\cancel{\text{min}}} \cdot \frac{1\cancel{\text{m}}}{60\cancel{\text{sec}}}$$

inches/second

$$\frac{190080}{3600} \frac{52.8 \text{ inches}}{1 \text{ sec}}$$

$$\frac{3\text{m}}{1\text{hr}} \cdot \frac{5280\text{ft}}{1\text{m}} \cdot \frac{12\text{inch}}{1\text{ft}} \cdot \frac{1\text{hr}}{60\text{min}} \cdot \frac{1\text{m}}{60\text{sec}}$$

Homework

Find Prime Factor

1) 54

2) 150

3) 504

4) 186

5) 792

6) A radio controlled car traveled 30 feet in 1.6 seconds. How fast in miles per hour?

7) .025 day = how many seconds?

8) 50 meters per/sec = kilom/hour?

9) 1200 ounces = how many tons?

$$16 \text{ oz} = 1 \text{ lb. } 2000 \text{ lbs} = 1 \text{ ton}$$